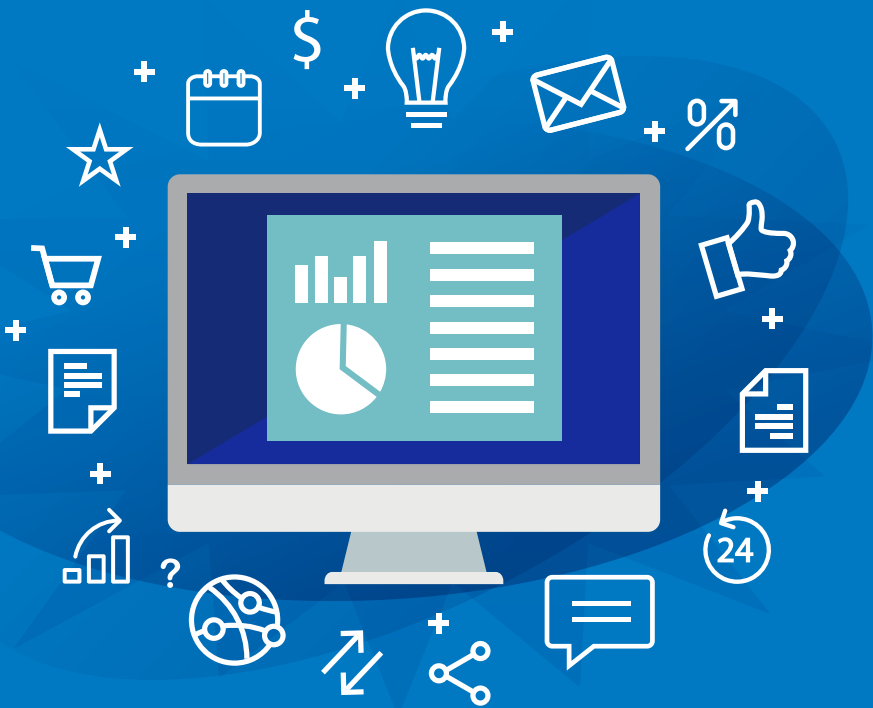


Unable to load? [View this email in your browser.](#)

AMERICAN EXPRESS
GLOBAL MERCHANT SERVICES



YOU'VE BEEN
GONE. WE'VE
BEEN BUSY.



You haven't logged into your American Express® Merchant Account in a while. While you've been gone, the site was updated to make it even easier to stay on top of Payments, Disputes and all your Account details.

[Log in now and check out these changes:](#)



Payments—Access 24 months* of your E-Statement history.



Disputes—Use the gear icon to easily add/remove columns from your Case Summary.



New Small Business Resource Center— Learn about free tools & programs to help promote your business and connect to more customers.

If you have any questions, we're only a click away. We'll get you up to speed on the site, and we'll make sure you're comfortable using it. Just log in and take advantage of our interactive “WalkMe” assistance or Live Chat features.

We hope you come back soon—accounts become inactive after 12 months without a login and require re-registration.

*Statements are not pulled retroactively. Merchants who have activated their online Merchant Account within the last 24 months will only be able to access E-Statements for the number of months since activation.

Tell us what you think. Share your [feedback](#) on this communication.

Visit us at americanexpress.com/merchant

REENG0418EM1

[Contact Customer Service](#) | [Privacy Statement](#) | [Add Us to Your Address Book](#)

American Express Merchant Services
100-01-01
2401 W Behrend Dr #55
Phoenix, AZ 85027

© 2018 American Express. All rights reserved.

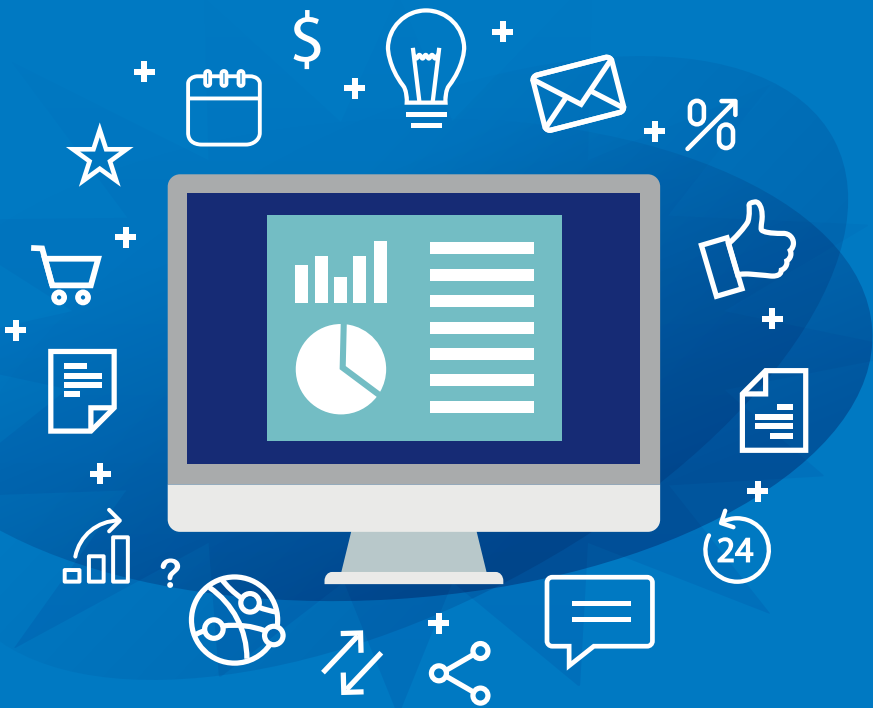
Unable to load? [View this email in your browser.](#)

AMERICAN EXPRESS

GLOBAL MERCHANT SERVICES




YOU'VE BEEN
GONE. WE'VE
BEEN BUSY.




You haven't logged into your American Express® Merchant Account in a while. While you've been gone, the site was updated to make it even easier to stay on top of Payments, Disputes and all your Account details.


[Log in now and check out these changes:](#)



[Payments](#)—Access 24 months* of your E-Statement history.



[Disputes](#)—Use the gear icon to easily add/remove columns from your Case Summary.



[WalkMe Tutorials](#)—Take a walk through common actions Merchants take and learn at your pace.



If you have any questions, we're only a click away. We'll get you up to speed on the site, and we'll make sure you're comfortable using it. Start by downloading our latest [Disputes](#) and [Account Management](#) user guides.

We hope you come back soon—accounts are rendered inactive after 12 months without a login. Inactive accounts require re-registering.

*Statements are not pulled retroactively. Merchants who have activated their online Merchant Account within the last 24 months will only be able to access E-Statements for the number of months since activation.

Tell us what you think. Share your [feedback](#) on this communication.

Visit us at americanexpress.com/merchant

REENG0418EM2

[Contact Customer Service](#) | [Privacy Statement](#) | [Add Us to Your Address Book](#)

American Express Merchant Services
100-01-01
2401 W Behrend Dr #55
Phoenix, AZ 85027

© 2018 American Express. All rights reserved.